

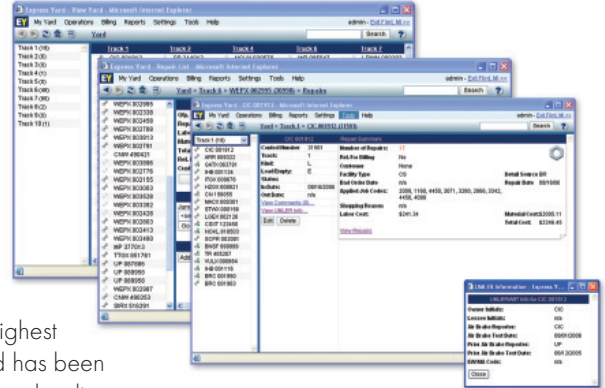
## ExpressYard Software Data Sheet

### Eliminate costly errors and boost your productivity

Some of the most common problems encountered in car repair billing are wrong charges and inaccurate bills that result in counter bills; yet many companies do little to correct these mistakes.

Many of these problems stem from old home-grown systems, out of date reference information or just lack of effort to look up the correct information. All of these problems can lead to increased overhead and decreased cash flow and productivity.

ExpressYard is a system designed to eliminate all of these issues while maintaining the highest quality, ease of use and a centralized place to store all of your information. ExpressYard has been proven to decrease administrative overhead and eliminate pricing and validation mistakes, leading to a more profitable business overall. All of this power is available to you with one system, all accessible via a standard web browser.

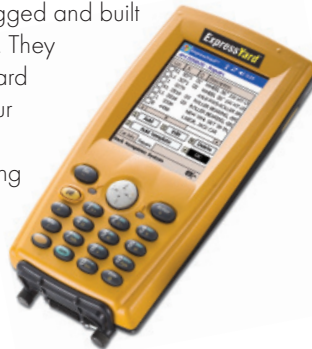


### Support for Industry Standards

In addition to all of the time saving features of ExpressYard, it's also kept up-to-date with all the industry billing standards. This way you will always know that your software is up-to-date and the information produced from the system is accurate.

### Optional Wireless Handhelds

ExpressYard's wireless handhelds are rugged and built for quick and accurate repair data entry. They automatically synchronize with ExpressYard wirelessly and are always up-to-date. Our handhelds can also be outfitted with our exclusive AEI Tag Readers, further reducing errors and increasing speed.



### Monitor, Report and Audit Your Entire Operation

ExpressYard provides many reports that allow you to monitor the performance of your repair operation enabling you to identify trends or inconsistencies in your operation that may need to be addressed.

In addition, the FRA mandates that repair facilities retain copies of all billing repair cards for a minimum of one year from the date of repair. ExpressYard provides a central location for storage of all of your historical information without printing and storing mountains of messy paperwork.

### Complete Flexibility

ExpressYard is flexible in a multitude of ways. While it promotes adhering to industry rules and standards, it also gives users the flexibility to enter the information necessary to achieve the desired output. Additionally, the ExpressYard support team has made it their mission to make the system accommodate the needs of all of its users.

### ExpressYard Features

- Car Repair Billing (AAR/NITL/Custom)
- Umler/EMIS Integration
- EW/MA/Air Brake Test Due Dates
- ASCII Data Exchange Files (All formats)
- Integrated Inventory Management
- Integrated Labor Tracking
- Rugged Wireless Handhelds
- AEI Tag Scanners
- Yard Management
- Estimates/Approvals/Work Orders

### ExpressYard Benefits

**Customization** – ExpressYard can be easily custom tailored to meet the business practices of your railcar repair company.

**Reduced Overhead** – ExpressYard allows your IT and administrative personnel to perform other important job duties by having all software updates and backups performed offsite by our trained professionals.

**Easy To Use** – ExpressYard is extremely easy to use, with most users able to produce bills from the system on the first day.

## Industry Information at Your Fingertips

### Umler/EMIS Car Validation

As each car is entered into the system its car marks are checked for existence against the Umler/EMIS database. The system will warn you if the car marks entered do not exist in Umler/EMIS, eliminating the ability to enter a wrong car initial or number.



### Early Warning and Maintenance Advisories

ExpressYard will notify you of an early warning or maintenance advisory immediately, as you add the car.

### Air Brake Test Data

Each car is checked for required air brake tests when added. Additionally, the air brake test reporter and dates can be pulled up for each car.

### AAR and RAC Price Master

ExpressYard is automatically kept up-to-date each quarter as the AAR and RAC release new rules and pricing that must be adhered to in order to create an accurate record of repairs.

### Rule Lookup

Entering a repair and don't have a field manual nearby? ExpressYard has all of the valid codes and rules for the entire field manual available to you right in the repair entry screen.

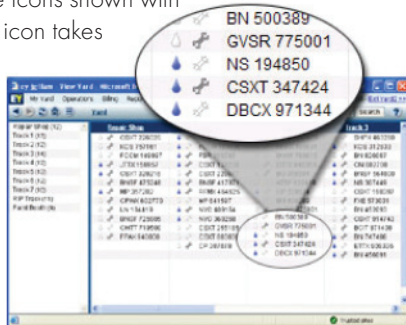
### Automatic Updates

ExpressYard automatically updates without user intervention and without disrupting daily workflow. That means you'll always have the latest web software, AAR/RAC Price Master, Rules & Regulations and Umler/EMIS updates.

## Access to Your Data

### Yard Overview

Quickly see which cars have repairs, cleaning, early warnings or need air brake tests with the icons shown with each car. Clicking on each icon takes you directly to the relevant screen in the system, such as a screen where you can view and edit repairs.



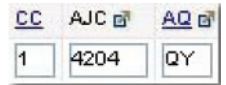
### Quick Car Search

ExpressYard allows you to easily search for any car that has ever visited your facility by simply entering the car mark. If you don't know the entire mark, you can enter the parts of the initial and number that you do know.

## Speedy Repair Entry

### Ultra-Fast Repair Entry

Enter repairs more quickly than ever before by utilizing ExpressYard's streamlined repair entry interface, keyboard shortcuts and popup menus. All the information needed to enter a valid priced repair is at your fingertips, including integrated lookups for all codes on the repair, pricing previews, material search and allocation, rule validation and lookup and more!



### Repair Templates

Templates allow users to quickly add five, ten or hundreds of line items to a BRC with the click of a button. Perfect for quickly adding program or common repairs to cars inspected at your facility.

### Bulk Repair Editing

Change one or more fields on any number of repairs with a few clicks of the mouse, great for changing the responsibility or any other repair line information en masse.

### Automatic Pricing

Eliminate pricing errors by having ExpressYard automatically price the labor and material on your repairs with the most up-to-date AAR, RAC or contract prices.

## Billing

### Group Billing

Group billing is done automatically in ExpressYard, without the need for you to mark individual repairs as group billable. If a car is able to be group billed when creating a bill, you are simply given an option to include it on a group bill or on a standard BRC.

### Bulk Billing

Save time by preparing the bills, summaries and address labels for all of your customers with a few simple clicks or choose who to bill with the advanced bill splitting options.

### Flexible Bill Splitting

ExpressYard allows you to split your bills based on the responsible party, responsibility code, billing type code (AAR/Contract) and the customer. For example, bill only your United States contract customers for responsibility 3 repairs performed and include a re-priced copy of the bill at AAR pricing.

## Integrated Inventory Management

### Fully Integrated Inventory Management System

ExpressYard's inventory system provides the benefits of tight integration with the repair system, including part lookup and automatic part selection, and removes the need to have a third-party inventory system.



### Default Material Associations

ExpressYard can save you time by automatically picking the right part needed for the repairs you are writing up.

### Low Part Count Warnings

ExpressYard will notify the user when a part is below the user-defined low part count order point.

## Integrated Labor Tracking

### Fully Integrated Labor Tracking System

ExpressYard's labor tracking module is integrated with the car repair billing system, enabling cross-referencing of labor to repairs and quick and easy entry and accumulation of worker time cards within the ExpressYard system without switching programs or transferring data.

### Grouping and Analysis

Employees can be put into departments, and hours can be direct or indirect and can be assigned to projects. These departments and projects can then be used to analyze where your employees' hours are going.

### Forecast and Track Efficiency

Using ExpressYard's labor tracking module, the actual hours spent working on a car can be compared against the hours billed for that car giving you your efficiency for every car repaired. And before cars are completed, you can forecast the approximate amount of work remaining by comparing the estimated hours against the hours currently completed.

## Getting Your Data Out

### Data Exchange Files

ExpressYard supports industry standard data exchange formats including the AAR 160 and 500 byte files as well as GE, BNSF, TTX and any custom formats you may need.

```
1DEMOAEX 0508RAP124
1DEMOAEX 0508RAP124
1DEMOAEX 0508RAP124
```

### Excel, Word and PDF Exporting

Export your data to Microsoft Word, Excel and Adobe PDF directly from the ExpressYard reporting system.

## Customizable

### User Defined Job Codes and Prices

ExpressYard lets you define your own custom job codes and pricing, enabling you to control prices based on facility, customer, any or all codes of a repair, material used on a repair and more!

### Multiple Currency Support

Support for seamless U.S./Canadian operation is built into ExpressYard.

### Ability to Handle Contract and AAR in One Facility

Does your facility handle both contract and AAR work? ExpressYard can tag each car appropriately and separate your contract and AAR work when producing bills.

### Automatic Customer Assignment

Using the Umler/EMIS database or your own custom mappings, ExpressYard can automatically assign cars to the correct customer, as they are added.

## Top Notch Technical Support

### Live Support

Live support makes answering your questions quick and simple. By utilizing remote help technology, ExpressYard technical support representatives can share the same screen that you see, streamlining the support process by allowing our support staff to guide you step-by-step through your questions.

### Context-Sensitive Help

Getting help has never been easier. Have a question about something in ExpressYard? Click on the question mark provided on every screen and you'll be given the relevant page from the online user manual.

## Reporting System

ExpressYard has a multitude of built-in reports available to you. Below you'll find a small sampling of the reports found in ExpressYard, all of which are all customizable to your requirements. New reports are also easily developed to suit your reporting needs.

- Billing Repair Cards (BRC)
- Group Billing
- Estimates
- Work Orders
- Joint Inspection Certificates (JIC)
- Data Exchange Files (160/500 byte)
- Yard Reports
- Inventory System Reports
- Customer Reports
- Revenue Reports



## Supported Standards and Data Feeds

ExpressYard is driven by industry standards ensuring you will always have the latest support for industry rules, regulations and other information. The information listed below is all integrated into ExpressYard and readily available for all cars and repairs entered into the system. All of these are updated automatically as updates are issued. You'll never have to manually update your system again!

- AAR/NITL Repair Rules
- AAR/RAC Price Master
- Umler/EMIS
- Air Brake Test
- Early Warning
- Maintenance Advisories



## A Look at the ExpressYard Interface

Below you'll find a screenshot of the main yard view interface in ExpressYard. This interface allows you to easily see what cars are in your facility, if they have been cleaned or repaired and if they have any billing errors all in one view. This is just one of the many ways ExpressYard makes car repair billing easier.

### System Requirements

- Microsoft Windows 95 or higher
- Internet Explorer 6.0+
- Screen resolution of 800 x 600 or higher
- Internet connection (56K modem or higher, high-speed connection such as DSL, cable or dedicated connection recommended)

Express Yard - View Yard - Microsoft Internet Explorer

My Yard Operations Billing Reports Settings Tools Help admin - Exit Flint, MI >>

Yard Search ?

	Track 1	Track 2	Track 4	Track 6	Track 7
Track 1 (19)	☞ CIC 001912	☞ SP 244813	☞ NCUX 030579	☞ WFP 065647	☞ LRWN 009282
Track 2 (6)	☞ ARR 009322	☞ CNW 880042		☞ UP 075593	☞ CNW 249218
Track 3 (0)	☞ GATX 063791	☞ CNW 880210		☞ WEPX 003479	☞ MP 950391
Track 4 (1)	☞ IHB 001134	☞ SSW 023370		☞ WEPX 002382	☞ MP 956005
Track 5 (0)	☞ ITGX 009676	☞ MP 588559		☞ WEPX 002517	☞ MP 271513
Track 6 (48)	☞ HZGX 008821	☞ UP 360336		☞ WEPX 002561	☞ CTRN 500044
Track 7 (65)	☞ CN 156055			☞ WEPX 002580	☞ GVSR 765055
Track 8 (2)	☞ MACX 000301			☞ WEPX 002793	☞ VCY 179009
Track 9 (0)	☞ STWX 000156			☞ HTTX 092944	☞ GVSR 008660
Track 10 (1)	☞ LGEX 002126			☞ UP 210313	☞ SSW 062719
	☞ CSXT 123450			☞ CNW 880240	☞ MP 271534
	☞ NOKL 818503			☞ UP 454017	☞ MP 269015
	☞ SCPR 002001			☞ VCY 769646	☞ SSW 088327
	☞ BNSF 999999			☞ UP 961381	☞ SP 656484
	☞ TR 405207			☞ WEPX 002171	☞ SP 246427
	☞ VULX 000884			☞ WEPX 003711	☞ MP 950064
	☞ IHB 001116			☞ WEPX 002995	☞ UP 076874
	☞ BRC 001950			☞ WEPX 002338	☞ WEPX 002949
	☞ BRC 001963			☞ WEPX 002458	☞ WEPX 003346
				☞ WEPX 002768	☞ WEPX 002393
				☞ WEPX 003813	☞ WEPX 002329
				☞ WEPX 002791	☞ WEPX 003904
				☞ CNW 490421	☞ WEPX 002347
				☞ WEPX 003896	☞ WEPX 002244

Trusted sites

The complete railcar repair billing, inspection and operations management system

**ExpressYard™**

www.expressyard.com

P.O. Box 612 • Grand Blanc, MI 48480-0612  
Phone: (866) 505-1717 • Fax: (775) 244-0509